



# ETHIRAJ COLLEGE FOR WOMEN (Autonomous)

Chennai - 600 008

*Affiliated to the University of Madras  
College with Potential for Excellence  
Re-accredited with "A" Grade by NAAC*



**CALENDAR  
2022 -2023  
SELF-SUPPORTING**



# ETHIRAJ COLLEGE FOR WOMEN

(Autonomous)

No. 70, Ethiraj Salai, Chennai - 600 008

Tel : 044-2827 9189 Fax : 044 - 2828 2014

e-mail : principal@ethirajcollege.edu.in

Website : ethirajcollege.edu.in



Name .....

Designation / Class .....

Admission No. ....

Register No. .... Blood Group .....

Name of the Parent / Guardian .....

Address .....

.....

..... Pincode .....

Tel. Residence ..... Mobile .....

---



Revered Founder  
**Thiru. V.L. ETHIRAJ**  
(18-07-1890 - 18-08-1960)

---

# CONTENTS

---

	Page No.
Tamizh Thai Vazhthu .....	1
National Anthem .....	2
National Pledge .....	2
Untouchability Pledge and Child Labour Pledge .....	3
National Unity Day Pledge .....	4
National Integration Pledge .....	4
College Motto .....	5
College Song - Tamil .....	6
College Song - English .....	7
College Song - Hindi .....	8
Board of Trustees .....	9
College Committee .....	10
Profile of the College .....	11
Vision and Mission .....	14
Quality Policy .....	15
Teaching Faculty .....	16
Supporting Staff .....	25
Controller of Examinations - Office Staff .....	28
Admission and Withdrawal .....	29
Attendance and Discipline .....	30
General Information .....	31
Student Support Services .....	32
Library Guidelines .....	33
Co-Curricular Activities .....	34
Extension Activities and Leagues .....	35
Programmes of Study and Sanctioned Strength .....	36
Value Added Courses .....	37
Scholarships .....	38
Graduation Day Medals .....	40
Graduation Day Prizes .....	42
College Day Medals .....	44
College Day Prizes .....	45
College Day - Rolling Shields and Cups .....	47
Endowment Lectures .....	48
Calendar Schedule .....	49
Fee Chart .....	73
Semester Timetable .....	75

---



## தமிழ்த்தாய் வாழ்த்து

நீராருங் கடலுடுத்த நிலமடந்தைக் கெழிலொழுகும்  
சீராரும் வதனமெனத் திகழ்பரதக் கண்டமிதில்  
தெக்கணமும் அதிர்சிறந்த திராவிடநல் திருநாடும்  
தக்கசிறு பிறைநுதலும் தரித்தநறுந் திலகமுமே!  
அத்திலக வாசனைபோல் அனைத்துலகும் இன்பமுற  
எத்திசையும் புகழ்மணக்க இருந்த பெருந் தமிழணங்கே!  
தமிழணங்கே!  
உன் சீரிளமைத் திறம் வியந்து செயல் மறந்து  
வாழ்த்துதுமே! வாழ்த்துதுமே! வாழ்த்துதுமே!

“மனோன் மணியம்” பெ. சுந்தரம் பிள்ளை

## NATIONAL ANTHEM

Jana gana mana adhinayaka jaya he,  
Bharata bhagya vidhata,  
Punjab, Sindh, Gujarat, Maratha,  
Dravida, Utkala, Banga,  
Vindhya, Himachal, Yamuna, Ganga,  
Uchhala Jaladhi Taranga,  
Tava Shubha name jage,  
Tava shubha ashisa mage,  
Gahe tava jaya gatha;  
Jana gana mangala dhayaka jaya he,  
Bharata bhagya vidhata,  
Jaya he, jaye he, jaye he,  
Jaye jaye jaye jaye he.

## NATIONAL PLEDGE

India is my country. All Indians are my brothers and sisters.

I love my country and I am proud of its rich and varied heritage.

I shall always strive to be worthy of it.

I shall give my parents, teachers and all elders respect and treat everyone with courtesy.

To my country and my people, I pledge my devotion.

In their well - being and prosperity alone lies my happiness.

## UNTOUCHABILITY PLEDGE

### தீண்டாமைப் பழக்கத்தைக் கைவிட மேற்கொள்ளும் உறுதிமொழி

இந்திய அரசியலமைப்பின்பால், இடைவிடாத உளமார்ந்த பற்றுள்ள இந்தியக் குடிமகனாகிய நான், நமது அரசியலமைப்பில் தீண்டாமை ஒழிக்கப்பட்டு விட்டது என்பதை அறிவேன். தீண்டாமையை அடிப்படையாகக் கொண்டு எவர் மீதும் சமூக வேற்றுமையை, மனம், வாக்கு, செயல் என்ற எந்த வகையிலும் கடைப்பிடிக்க மாட்டேன் என்று இதனால் உளமார உறுதியளிக்கிறேன். அரசியலமைப்பின் அடிப்படைக் கருத்திற்கிணங்க, சாதி, சமய வேறுபாடற்ற சமத்துவ சமுதாயத்தை உருவாக்குவதில் நேர்மையுடனும், உண்மையுடனும் பணியாற்றுவது எனது கடமையாகும். மேலும், தீண்டத்தகாதவர்கள் என்று கொடுமைக்கு ஆளாகியுள்ள மக்களிடையே காணப்படும் தீண்டாமை உணர்வையும் போக்குவது நமது சமூகக்கடமை என்பதையும் உணர்ந்து செயல்படுவேன். இந்திய அரசியலமைப்பின்பால் எனக்குள்ள முழுப்பற்றிற்கு இது என்றென்றும் எடுத்துக்காட்டாக விளங்குமென்றும் இதனால் உளமார உறுதியளிக்கிறேன்.

## CHILD LABOUR PLEDGE

### குழந்தைத் தொழிலாளர் முறையினை அகற்றுவதற்கான உறுதிமொழி

இந்திய அரசியலமைப்பு விதிகளின் படி உழைப்பை நம்பி, உண்மையாய் உழைத்து நேர்மையாகப் பாடுபடுவேன் எனவும், மனித நேயத்திற்கு எதிராக எவரையும் ஒருபோதும் கட்டாயப்படுத்தி வேலைக்கு உட்படுத்த மாட்டேன் எனவும், கல்வி பெறுவது குழந்தைகளின் அடிப்படை உரிமை என்பதால் 14 வயதுக்குட்பட்ட குழந்தைகளை ஒருபோதும் எந்தவித பணிகளிலும் ஈடுபடுத்த மாட்டேன் எனவும், அவர்கள் பள்ளிக்குச் செல்வதை ஊக்குவிப்பேன் எனவும் இதன்மூலம் உறுதி கூறுகிறேன்.



# NATIONAL UNITY DAY PLEDGE

## தேசிய ஒருமைப்பாட்டு உறுதிமொழி

நாட்டின் உரிமை வாழ்வையும் ஒருமைப்பாட்டையும் பேணிக் காத்து வலுப்படுத்தச் செயற்படுவேன் என்று உளமார நான் உறுதி கூறுகிறேன்.

“ஒருபோதும் வன்முறையை நாடேன்” என்றும், “சமயம், மொழி, வட்டாரம் முதலியவை காரணமாக எழும் வேறுபாடுகளுக்கும், பூசல்களுக்கும் ஏனைய அரசியல் பொருளாதாரக் குறைபாடுகளுக்கும் அமைதி நெறியிலும் அரசியல்! அமைப்பின் வழியிலும் நின்று தீர்வு காண்பேன்” என்றும் நான் மேலும் உறுதியளிக்கின்றேன்.

# NATIONAL INTEGRATION PLEDGE

## நல்லிணக்க நாள் உறுதிமொழி

நான் சாதி, இன, வட்டார, மத அல்லது மொழி பாகுபாடு எதுவுமின்றி இந்தியாவின் அனைத்து மக்களின் உணர்வுப்பூர்வ ஒற்றுமைக்கும் நல்லிணக்கத்திற்கும் பாடுபடுவேன் என்று உளமார உறுதிமொழி எடுத்துக் கொள்கிறேன். மேலும் எங்களுக்கிடையேயான அனைத்து வேறுபாடுகளையும் வன்முறையில் ஈடுபடாமல் பேச்சுவார்த்தைகள் மூலமாகவும் அரசியலமைப்புச் சட்ட வழிமுறைகளைப் பின்பற்றியும் தீர்த்துக் கொள்வோம் என்றும் இதனால் உறுதி அளிக்கிறேன்.

# COLLEGE MOTTO



The Motto of the College reads as

**"TO STRIVE,  
TO SEEK,  
TO FIND AND  
NOT TO YIELD"**

The College Emblem symbolizes the spirit of adventure and the search for Knowledge and Truth.

The Ladder is meant to spur students to the heights of noble Venture and Success.

The Ship symbolizes the ship of adventure to carry one on an exciting journey into the land of Wisdom and Knowledge.

The Globe is the emblem of discovery, which promises a vision of Beauty, Truth and Loyalty to those who seek.

The Sword stands for resistance to all that is low, vile and evil and it will not yield except to the Highest and the Best.

## கல்லூரி வாழ்த்து

ஏறுவோம் முன்னேறுவோம் என்றுமே முன்னேறுவோம்  
எங்கள் எத்திராஜ் கல்லூரி ஏற்றம் வாழ்வில் தேறுவோம்.

உயர்வு தாழ்வு சாதி சமயம் மொழியில் இல்லை தெரிந்திட்டோம்  
உயர்வை நாடும் உள்ளமே உயர்ந்ததென்று போற்றுவோம்.  
உயர்ந்துயர்ந்து வாளைப்போல் ஓங்கும் கல்வி ஞானத்தை  
முயன்று தேடிக்காணவே முன்வைத்த கால்பின் வாங்கிடோம்.

உடல் உழைப்பும் உள்ளப் பரிவும் ஓங்கும் செல்வ நிதியமும்  
மடைதிறந்த வெள்ளம் போல மனமுவந்து நல்கினார்  
மடந்தையர்க்கோர் கல்விக் கோயில் மாண்புடனே நிறுவினார்  
கொடைவள்ளலாம் எத்திராஜின் கொள்கை வழி செல்குவோம்.

பாட்டுடனே அறிவியலும் பலகலையும் பயிலுவோம்  
நாட்டினிலே அறத்தைக் காக்க நல்லொழுக்கம் பூணுவோம்  
ஏட்டினிலே கற்ற கல்வி என்றும் எங்கள் நெஞ்சினில்  
ஊட்டும் தெய்வ பக்தியோடு தேசபக்தி ஓங்கவே.

வயங்கு தெய்வ தீபமாக ஒளிரும் கல்விச் சுடரினை  
முயன்று தேடிக்காணவே முன்வைத்த கால் பின்வாங்கிடோம்  
ஏறுவோம் முன்னேறுவோம் என்றுமே முன்னேறுவோம்  
எங்கள் எத்திராஜ் கல்லூரி ஏற்றம் வாழ்வில் தேறுவோம்.

மறைந்த செல்வி அ.இரா. இந்திரா  
முன்னாள் துறைத் தலைவர்  
தமிழ்த்துறை

## COLLEGE SONG

We will gather 'neath your banner'  
Neath the mauve and the White  
While in song we tell your praises  
Praises for alma mater  
We love our College, Ethiraj College;  
May it grow and may it grow,  
In Fame, Virtue and (in) lore

Time honoured Ethiraj (College)  
Thy walls to us are dear,  
Oh, how can we forget thee,  
Or the times that we've spent here?  
Strive we for what is worthy  
Seeking truth and finding joy,  
Yielding not to lie nor threat  
Love we alma mater

We remember our dear Founder,  
And of his virtues tell  
Great and magnanimous was he  
Who built our alma mater  
T' will be our firm endeavour  
To stand up for the right  
God protect and keep it ever  
Guide and help the Mauve and the White.

Then we'll give to Ethiraj College  
The honour that she's won  
And let us hope our labours,  
Have only just begun  
And when we're called to duty  
To battle for the right  
Wave on in all its beauty  
The Mauve and the White.

**Late Dr. (Tmt.) Anna George**  
Former Head  
Department of English

## महाविद्यालय – गीत

मनु – स्मृति में देखा हमने नारी महिमा – गान,  
भारती ने भी किया, नारी का गुण – गान।  
एक पुरुष जब शिक्षा पाता, बनता ज्ञानगार,  
एक नारी जब शिक्षा पाती, बनती, सपरिवार।

देखा हमने कर दिखलायीं ये बातें, साकार,  
एक महान नर जिसका है नाम, एतिराज अमर।  
है ऊँची शिक्षा और धन के, साथ सम्मान भी,  
किन्तु न भूला सृष्टि का है, श्रृंगार सदा नारी।।

लक्ष्य बनाया जीवन का ही, नारी का उद्धार,  
शिक्षा, पद, अधिकार, सभी का, वही रहे आगार।  
जीवन भर की पूँजी लगाई, वाणी मन्दिर में,  
नारी ने करके दिखलाया, ऊँचा इस जग में।।

आज नहीं वह ज्योति – शिखा पर, काम अमर ही है,  
भूल नहीं सकती नारी—गण, त्याग अमोल ही है।  
दिखलायेंगी दुनिया को हम नारी – शक्ति अपार,  
परा कर ही दम तोड़ेंगी, वे सपने साकार।

**Dr. (Tmt) Vatsala Kiran**  
Former Head  
Department of Hindi

# **BOARD OF TRUSTEES**

## **Chairperson**

**Tmt. CHANDRA DEVI THANIKACHALAM**

## **Financial Trustee**

**Thiru S. SRIDHARAN**

## **Members**

**Prof. S. VITTAL**

**Dr. M. SEKAR**

**Dr. D. KRUPA SHANKAR**

## **University Representative**

**Prof. E. MURUGAN**

University of Madras

## **Principal & Secretary**

**Dr. (Tmt.) S. KOTHAI**

# **THE COLLEGE COMMITTEE**

## **Chairperson**

**Tmt. CHANDRA DEVI THANIKACHALAM**

## **Financial Trustee**

**Thiru S. SRIDHARAN**

## **Members**

**Prof. S. VITTAL**

**Dr. M. SEKAR**

**Dr. D. KRUPA SHANKAR**

## **University Representative**

**Prof. E. MURUGAN**

University of Madras

## **Principal & Secretary**

**Dr. (Tmt.) S. KOTHAI, M.Sc., M.Phil., Ph.D.**

## **Staff Representatives**

**Dr. Tmt. V. MANIMOZHI, M.Sc., M.Phil.,**

**Dr. (Tmt.) V. SHANTHI, M.Com., M.Phil., Ph.D.**

## PROFILE OF THE COLLEGE

Education is a path to human progress and the means through which every human being realizes his or her full potentiality as it has a formative effect on the mind, character and physical ability of an individual. It is the basis for the development and empowerment of every nation and it is the process by which the society deliberately transmits its accumulated knowledge, skills and values from one generation to another. With this in mind, the Ethiraj College for Women was founded by the illustrious Barrister-at-Law, Thiru V.L.Ethiraj in 1948. His philanthropic donation of Rs. 10 lakhs and the title deeds of two bungalows paved the way for the establishment of the College to empower young women through holistic education.

Ethiraj College with a proven track record of 70 years enjoys a position of eminence. The emergence of the College as a leading educational institution in Tamil Nadu is possible owing to the dynamic leadership of successive Chairmen and Members of the Board of Trustees, galaxy of Principals, dedicated and committed Faculty of past and present and the able support rendered by the Administrative and Supporting Staff.

The College is centrally located in the heart of Chennai city and is well connected by both road and rail. It is spread over 9 acres and has adequate infrastructure for the academic and administrative functions. Today, the College is one of the select Colleges in India recognized with the award of "College with Potential for Excellence". A premier institution dedicated to the cause of women's education, the College was ranked number one in the Internal Quality Audit conducted by the IQAC of the University of Madras in 2005. The College was re-accredited with the highest grade 'A' by NAAC in 2013. The College was conferred with the "Excellence in Higher Education Award, 2015" by the VIT University and Educational Excellence Award from the Indus Foundation at the Indo American Education Summit 2016. The College is awarded the 36<sup>th</sup> rank at the All India level by the National Institutional Ranking Frame Work by the Ministry of Human Resources Development (2019 -20). The College has adopted two villages, Nemilicheri and Karunakaracheri in the year 2017-2018 for their development.

The formative years of the Institution witnessed the laying of a strong foundation through the introduction of Undergraduate Programmes in Economics, Botany, Chemistry, History, Zoology and English Literature. The decade, 1968-78 saw the growth of the College with the introduction of Commerce, Mathematics and Physics at the UG level and a number of PG Programmes. The introduction of B.Com. programme in the Self-Supporting Stream in 1981 is an important milestone in the history of the College. With a major thrust on Research, various M.Phil and Ph.D. programmes were introduced over a period of time.



The construction of the Campus II in 59 grounds marked a new direction in the growth of the College. The year 1990-2000 witnessed a steady growth with the introduction of many job-oriented programmes in the Self-Supporting stream such as B.Com Corporate Secretaryship, B.Com Bank Management, Bachelor of Business Administration, B.Sc. Biochemistry, B.Sc. Microbiology, M.Sc. Plant Biology & Plant Biotechnology and the AICTE approved Postgraduate programmes, MBA and MCA.

To keep pace with the growth of the institution, state-of-the art infrastructural facilities were also enhanced. The first phase witnessed the construction of the Science Block, Hostel, Open-Air Theatre, Old Library Block and the Auditorium which remains the pride of the College even today. It was followed by the construction of PG Block and New Science Block. To commemorate the 125th Birth Anniversary of the Revered Founder Shri. V.L. Ethiraj, the College had a year long celebration in the year 2015 – 2016 along with the unveiling of new OAT, in Campus II.

In the beginning of the next decade, the Aided College was granted autonomy status which was followed by a rapid growth in its infrastructure - the N & D Block, COE Block, New Library, New Hostel, Business Studies and Information Technology Block, adding upto 2,66,000 sq.ft. Besides these the College also has Computer Labs, Language Labs, Instrumentation Centre, Online access to the holdings in the Library and Internet Centre. The College entered the global arena by signing MoUs with Concordia College, New York, Association of Chartered Certified Accountants UK, TVS training and services, Department of Archaeology, Govt. of Tamil Nadu, - National Institute for Research in Tuberculosis (ICMR), CMA Certified Management Accountant USA, Centre for Indian Knowledge System (CIKS) Chennai and South Indian Chamber of Commerce and Industry and a MoA has been signed with Binghamton University, State University of New York.

The core competency has been strengthened in many ways to suit the changing scenario. In the Aided stream, Botany was converted to Plant Biology and Plant Biotechnology, Zoology to Advanced Zoology and Biotechnology and one section of History to Tourism and Travel Management. In the Self-Supporting Stream, Economics was converted to Business Economics and one section of English to English and Communication Skills. At the PG level a programme in Human Rights and Duties Education was introduced in 2002. New programmes namely B.Sc. Clinical Nutrition, M.Sc. Physics and M.Sc. Food and Nutrition were also introduced in 2005 in the Self-Supporting stream. In 2006, B.Sc. Visual Communication, M.Sc.

Biochemistry and M.Sc. Applied Microbiology were introduced. In 2007, the Departments of Corporate Secretaryship and Plant Biology and Plant Biotechnology introduced the M.Phil Programmes. The year 2009 witnessed the inception of the UGC funded Centre for Women's Studies, which offers a Certificate Course in Gender Studies to students across the disciplines. In 1990 - 2000 and 2010 - 2010-2011, the Departments of Physics and Clinical Nutrition and Dietetics introduced the M.Phil Programmes. At the UG level, Bachelor of Computer Applications (B.C.A.) was introduced in the year 2010 - 2011. In 2012 - 2013 the Department of Chemistry and Plant Biology and Plant Biotechnology were upgraded to full-fledged Research Departments offering Ph.D. programmes and two new UG programmes, B.Sc. Mathematics with Computer Applications and B.Com Honors were introduced. In 2013-2014 the Department of Bank Management, introduced a PG programme in Banking and Insurance Management, in 2014 - 2015, the Department of MCA introduced M.Phil., in Computer Science, the Department of Visual Communication introduced a PG programme in Journalism and Communication. In 2016 – 2017, B.Com Accounting and Finance, M.Com. and one more section in B.Com were introduced in the Self Supporting stream. Today the College enjoys the pride of offering 30 UG programmes, 23 PG programmes including AICTE approved MBA and MCA, 21 Research programmes (M.Phil., and Ph.D.) and many Certificate Courses for around 8000 students.

Ethiraj Centre for Research, Innovation and Creativity (ECRIC) was formed in the year 2019- 2020 by the Management to enhance Research in the College. The Internal Quality Assurance Cell (IQAC), since its inception in 2004, acts as a nodal unit of the Institution, augmenting quality in academic and administrative activities. The Placement Cell is the effective liaison between the industrial sector and academia. Every year Career Fair is held followed by recruitment drive, which finds students getting placed in enviable positions. The Parent Teacher Association, a registered body, plays a major role in the maintenance and developmental activities of the College. The College observes 26<sup>th</sup> January as the Alumnae Association Day (Ethi Bandhan) every year. Generations of our alumnae have brought pride to the College by their contributions in various walks of life.

All the endeavours of the College are inspired by its motto - **To Strive, to Seek, to Find and not to Yield**. The high standards of academic excellence and varied activities help in the integrated development of the Ethirajians enabling them to face the future with courage and confidence.

# **VISION AND MISSION**

## **VISION**

To holistically develop women, by imparting knowledge, value systems, technological competencies and global skill sets.

To harness their full potential, to prepare them to be responsible citizens, compassionate leaders, agents of social change and participants in the National Development.

## **MISSION**

To achieve our vision by creating a student centric learning environment that is driven by a passion for excellence, research culture and an eco-system for innovation and creativity.

To encourage a participatory approach among staff, students, alumni and other stakeholders.

To provide adequate opportunities to engage in multitude of interests of our diverse student community in academic, co-curricular and extra-curricular activities.

To offer a campus of excellence with world class infrastructure, technology and support services to our staff and students.

To have a Management that would uphold the highest levels of transparency, accountability and governance in meeting the ideals of the Founder of the college.

## QUALITY POLICY

*"To strive, to seek, to find and not to yield"*

Thiru V.L. Ethiraj's vision of women empowerment inspires us to provide a quality and need-based education. We disseminate knowledge without compromising on standards and values. As a Hallmark of education, we impart to our students development of self-confidence, inculcation of ethics, fostering independent thinking and pursuit of excellence, sensitization to social and environmental needs and a holistic / global outlook on life.

**கல்வியில் தரக்கொள்கை  
கடுமையற்சியும் தேடலும் அறிந்து கொள்வதற்கே  
பலன் கருதி அல்ல**

பெண்ணின் மேம்பாட்டை குறித்து திரு. வி.எல். எத்திராஜ் அவர்கள் கொண்டிருந்த தொலைநோக்குப் பார்வைதான், தரம் மிக்க மற்றும் தேவைசார் கல்வியை நாம் அளிப்பதற்குப் பெரும் உந்துதலைத் தந்துள்ளது. இதன்படி கல்வியின் மதிப்பிலோ, தரத்திலோ எத்தகைய குறைவுமின்றி அறிவை நாம் நாற்றிசையும் பரப்புவோம். வாழ்வில் உலகநோக்கு, சமூகம் மற்றும் சுற்றுச்சூழல் தேவைகளில் கூருணர்வு, சுதந்திரம், சால்பில் உறுதி, தன்னம்பிக்கையில் புதுவளம் என அனைத்து நிலைகளிலும் நமது பாங்கினைக் கல்வி எனும் அதிகார முத்திரையின் மூலம் அளிப்போம்.

## TEACHING FACULTY

**Tmt. S Kothai**, M.Sc., M.Phil., Ph.D.  
**Principal & Secretary**

**Tmt. T. Usha Priya**, M.Com., M.Phil., Ph.D.  
**Vice Principal - Self Supporting**

### DEPARTMENT OF ENGLISH

1. Tmt. K. Yeshoda, M.A., M.Phil., ADCWE  
**Head of the Department**
2. Tmt. Elizabeth Thomas, M.A., M.Phil.,
3. Selvi. B. Chitra, M.A., M.Phil.
4. Selvi. Vidya Shri, M.A., M.Phil.
5. Tmt. Uma Viswanathan, M.A., M.Phil., Ph.D.
6. Selvi. J. Marion Felicia, M.A., M.Phil.
7. Tmt.V. Bharathi, M.A.
8. Tmt. Elizabeth Biju, M.A., M.Phil., Ph.D.
9. Selvi K.A. Deepa, M.A., M.Phil.
10. Tmt. M.G. Nirmala, M.A., M.Phil., Ph.D.
11. Tmt. K. Maya Devi, M.A., M.Phil.
12. Tmt. A. Felitia, MA., M.Phil., Ph.D.
13. Tmt. S. Nazeema Begum, M.A., M.Phil.
14. Tmt. B. Gnanam, M.A., M.Phil.
15. Selvi. D.M. Vedha Priya, M.A., M.Phil., B.Ed., PGDHRM., Ph.D.
16. Tmt. Abinaya B, M.A., M.Phil.
17. Selvi. R.Arun Janani, M.A., M.Phil.
18. Selvi. Aazhi Arasi A, M.A.

### DEPARTMENT OF LANGUAGES

#### TAMIL

19. Tmt. M. Esther Jagadeeswari, M.A., M.Phil., Ph.D., DCA.,
20. Tmt. C. Vijayalakshmi, M.A., Ph.D.
21. Tmt. P. Jayaselvi, M.A., M.Phil., Ph.D.
22. Tmt. V. Disilla Kumari, M.A., M.Phil., Ph.D.
23. Tmt. M. Sujatha, M.A., M.Phil., Ph.D.
24. Tmt. R. Geethavani, M.A., M.Phil., Ph.D.

## **HINDI**

25. Tmt. Hema Krishnan, M.A., Ph.D.
26. Tmt. V. Geeta Malini, M.A., M.Phil., Ph.D.

## **FRENCH**

27. Tmt. V.R. Vidjealatchoumy, M.A.

## **SANSKRIT**

### **DEPARTMENT OF COMMERCE**

28. Selvi. K. Geetha, M.Com., M.Phil., FCMA  
**Head of the Department**
29. Tmt. Sharmila Thambi Radhakrishna, M.Com., M.Phil. Ph.D.
30. Tmt. B. Akila Priya, M.Com., M.Phil., Ph.D.,
31. Tmt. Sudeshna T, M.Com., M.Phil., MFM., Ph.D.
32. Tmt. S. Anitha, M.Com., M.Phil.
33. Tmt. Kavitha Manikandan, M.Com., M.Phil., MBA
34. Tmt. Krishnaveni K, M.Com., M.Phil., MBA
35. Tmt. Rajalakshmi M, M.Com., M.Phil., MBA
36. Tmt. Sushma Catherine P, M.Com., M.Phil.
37. Tmt. Nirmala T.K., M.Com. M.Phil.
38. Tmt. Supraja H, M.Com., M.Phil.
39. Tmt. Krithika Bhaskar, M.Com. (BIM)
40. Tmt. Roshni .K.K, M.Com.
41. Tmt. T. Shobana, M.Com. (BIM)

### **DEPARTMENT OF MATHEMATICS**

42. Tmt. Ezhilarasi Hilda Stanley, M.Sc., M.Phil., B.Ed., Ph.D.  
**Head of the Department**
43. Tmt. K.R. Bindu, MSc., M.Phil.
44. Tmt. G. Shailaja, M.Sc., M.C.A., M.Phil.
45. Tmt. M. Raja Rajeswari, M.Sc., M.Phil.
46. Tmt. Rebekal Haribabu, M.Sc., M.Phil.
47. Tmt. Regala Jebalily, M.Sc., B.Ed., M.Phil., Ph.D.
48. Tmt. K. Indumathy, M.Sc., M.Phil.

49. Tmt. N. Subashini, M.Sc., M.Phil., B.Ed.
50. Selvi A. Robina Tony, M.Sc., M.Phil., Ph.D.
51. Selvi. S. Krithika, M.Sc., M.Phil.
52. Selvi. G. Mahalakshmi, M.Sc., M.Phil.

#### **DEPARTMENT OF CORPORATE SECRETARYSHIP**

53. Tmt. R.Geethalakshmi, M.Com., M.Phil., MBA., Ph.D.  
**Head of the Department**

54. Tmt. Kavitha Rajeshwara Rao, M.Com., M.Phil.
55. Tmt. R. Vijayalakshmi, M.Com., M.Phil., MBA., Ph.D.
56. Tmt. M. Sharmeen Farooq, M.Com., M.Phil., Ph.D.
57. Tmt. Olive David, M.Com., M.Phil., Ph.D.
58. Tmt. K. Vijayalakshmi, M.Com., M.Phil.
59. Tmt. Remya Ravi, M.Com., M.Phil., MBA., Ph.D.
60. Tmt. T.S. Vaishnavi, M.A., (C.S.), M.Phil., MBA., ACS (Inter)
61. Tmt. S. Meenakshi, M.Com., M.Phil., MBA.
62. Selvi S. Preetha Carolin, M.Com.

#### **DEPARTMENT OF BUSINESS ECONOMICS**

63. Tmt. M. Hima Bindu, M.A., M.Phil., Ph.D.  
**Head of the Department**
64. Tmt. P.S. Vijayalakshmi, M.A., M.Phil., Ph.D.
65. Tmt. R. Deepika, M.A.,
66. Tmt. R. Mythili, M.A., M.Phil.
67. Tmt. S. Sudha, M.A., M.Phil., Ph.D.

#### **DEPARTMENT OF COMPUTER SCIENCE**

68. Tmt. K. Jane Nithya, M.Sc., M.Phil.  
**Head of the Department**
69. Selvi G.Thilagavathi, MCA., M.Phil.
70. Tmt. S. Mathivilasini, M.Sc., M.Phil., Ph.D.
71. Tmt. D. Sridevi, M.C.A., M.Phil., Ph.D.
72. Tmt. Tejay Johnson, M.C.A., M.Phil. Ph.D.
73. Tmt. P. Abirami, M.Sc., M.Phil.
74. Tmt. V. Durgadevi, M.C.A., M.Phil.

## **COMPUTER PROGRAMMER**

75. Tmt. P. Jayapriya, B.E., MBA., M.Phil., MCA

76. Tmt. J. Meenakshi, M.C.A., M.Phil.

## **DEPARTMENT OF PLANT BIOLOGY AND PLANT BIOTECHNOLOGY**

77. Selvi. T. Mythili, M.Sc., M.Phil., Ph.D.

### **Head of the Department**

78. Selvi. Sanjana Julias Thilakar, M.Sc., M.Phil.

79. Tmt. S. Narmatha, M.Sc., M.Phil.

## **DEPARTMENT OF BANK MANAGEMENT**

80. Tmt. T. Usha Priya, M.Com., M.Phil., Ph.D.

### **Head of the Department**

81. Tmt. V. Jayanthi, M.Com., M.Phil., Ph.D.

82. Tmt. N. Renuka Devi, M.Com., M.Phil., Ph.D.

83. Tmt. A.J. Jemima Malathy, M.C.S., M.Phil.

84. Tmt. S. Pravina, M.Com., M.Phil.

85. Tmt. R. Anupama. M.Com., M.Phil.

86. Tmt. G. Poojitha, M.Com.

## **DEPARTMENT OF BIOCHEMISTRY**

87. Tmt. M. Sujatha, M.Sc., M.Phil., Ph.D.

### **Head of the Department**

88. Tmt. C.N. Deepa, M.Sc., (Biochem), M.Sc., (Bioinfo), M.Phil., Ph.D.

89. Tmt. V. Malathi, M.Sc., M.Phil., Ph.D.

90. Tmt. S. Vijayalatha, M.Sc., (Biochem), M.Sc., (Bioinfo), Ph.D.

91. Tmt. Safiya, M.Sc., M.Phil., Ph.D.

92. Tmt. J. Priya, M.Sc., M.Phil., Ph.D.

93. Tmt. B. Thendral Hepsibha, M.Sc., M.Phil., Ph.D.

94. Tmt. Fatima Cynthia Antony, M.Sc., M.Phil., Ph.D., PGDMLT

95. Tmt. N. Sudha, M.Sc., M.Phil., DMLT.



## **DEPARTMENT OF MICROBIOLOGY**

96. Tmt K. Krishna Prema M.Sc., M.Phil., Ph.D., M.Sc (Bioinformatics)

### **Head of the Department**

97. Tmt. V. Gayathri, M.Sc., M.Phil., Ph.D.

98. Tmt. C. Ganga Baheerathi, M.Sc., M.Phil., Ph.D.

99. Tmt. A. Subhashini, M.Sc., Ph.D., M.Sc (Bioinformatics)

100. Tmt. Anusha Balasingh, M.Sc., M.Phil., Ph.D., FIAAM

101. Tmt. M. Linnett Naveena, M.Sc., Ph.D.

102. Tmt. S. Nandhini, M.Sc., Ph.D.

103. Tmt. C.V. Vidhya, M.Sc., M.Phil., Ph.D.

104. Tmt. J. Mary Sheela, M.Sc., M.Phil., Ph.D.

105. Tmt. G. Sangeetha Vani, M.Sc., M.Phil., Ph.D., M.Sc (Bioinformatics)

106. Tmt. M. Reena, M.Sc., Ph.D., FIAAM

107. Tmt. G. Padmini Mary, M.Sc.

## **DEPARTMENT OF BACHELOR OF BUSINESS ADMINISTRATION AND MA IN HUMAN RESOURCE MANAGEMENT**

108. Tmt. G. Rajalakshmi, M.Com., M.B.A., M.Phil., Ph.D.

### **Head of the Department**

109. Tmt. M. Padmaja, M.Com., M.Phil., ACMA.

110. Tmt. R. Bhuvaneswari, M.Com., M.Phil.

111. Tmt. M. Vanishree, M.C.S., M.B.A., M.A. (Women Studies) M.Phil., Ph.D.

112. Tmt. C.S. Jayalakshmi, M.B.A., M.Phil.

113. Tmt. S. Saranya M.B.A., M.Phil., Ph.D

114. Tmt. S. Sharmila M.B.A., M.Phil., Ph.D

115. Tmt. S. Gayathri MHRM., MBA., M.Com., M.Phil., Ph.D

116. Tmt. R. Latha, MBA., M.Phil., Ph.D

## **DEPARTMENT OF PSYCHOLOGY**

117. Tmt. M. Ramya Maheswari, M.Sc., M.Phil., Ph.D.

### **Head of the Department**

118. Tmt. K. Jayanthi Rani, M.A., M.Phil., Ph.D.

119. Tmt. Keren Fredrick, M.Sc.

120. Selvi. K. Radhikaa. M.Sc., M.Phil.

121. Selvi. Helina Susan Shaji, M.Sc.

122. Tmt. Lavanya. G, M.Sc. M.Phil.

123. Selvi. Shilpa Grace Samuel, M.Sc.

124. Tmt. Pavithra. M, M.Sc.

#### **DEPARTMENT OF CLINICAL NUTRITION AND DIETETICS**

125. Tmt. Varalakshmi Rajam S, M.Sc., M.Phil., Ph.D.

##### **Head of the Department**

126. Tmt. Usha Suresh, M.Sc., Ph.D.

127. Tmt. Nithya Maloney Bright, M.Sc., Ph.D.

128. Tmt. B. Barathi, M.Sc., FSM.

129. Tmt. Rajkala A, M.Sc., FSM.

130. Tmt. Bhuvaneswari Sivakumar, M.Sc., M.Phil.

131. Selvi K. Sangeetha, M.Sc., M.Phil.

132. Selvi T. Renny Jasper Mary, M.Sc., M.Phil., RD.

133. Tmt. M. Menaka, M.Sc., M.Phil., Ph.D.

#### **DEPARTMENT OF PHYSICS**

134. Tmt. S. Abhirami, M.Sc., M.Phil., Ph.D.

##### **Head of the Department**

135. Tmt. J. Bhavani, M.Sc., M.Phil., Ph.D.

136. Tmt. Rajeswari Gangadharan, M.Sc., M.Phil., Ph.D.

137. Tmt. S. Leela, M.Sc., Ph.D.

138. Tmt. N. Aparnadevi, M.Sc., M.Phil.

#### **DEPARTMENT OF VISUAL COMMUNICATION**

139. Tmt. V. Shridevi, M.A., M.Phil.

##### **Head of the Department**

140. Selvi. Maureen Joanna Finny, M.A.

141. Tmt. P.V. Sangeetha, MJC., M.Phil., Ph.D.

#### **DEPARTMENT OF JOURNALISM AND COMMUNICATION**

142. Tmt. U.N. Mahalakshmi, M.A., M.Phil.

##### **Head of the Department**

143. Tmt. C. Nandhini, M.Sc., M.A., M.Phil.

144. Tmt. N. Theerka, M.Sc., M.A., M.Phil.

#### **DEPARTMENT OF HUMAN RIGHTS AND DUTIES EDUCATION**

145. Tmt. R. Nithya, M.A., M.Phil., PGDHRM, PGDNGOM

##### **Head of the Department**

146. Tmt. M.B. Pavithra, M.A., (Criminology), M.A., (Human Rights), Ph.D.  
147. Tmt. C. Shobha Sharma, M.A., (Human Rights), M.A. (Pol. Sci.)  
M.Sc. (Mathematics), MBA., M.Phil., Ph.D.  
148. Tmt. V.R. Shirly Grace Nirmala, M.A. (Human Rights), M.A. (Hindi)

### **DEPARTMENT OF BACHELOR OF COMPUTER APPLICATIONS**

149. Tmt. M. Henila, M.C.A., B.Ed., M.Phil., P.G.D.C.S.  
**Head of the Department**  
150. Tmt. S. Janes Pushparani, MCA., M.Phil.  
151. Tmt. A. Radhika, MCA., M.Phil.  
152. Tmt. M. Meharunnisa, M.Sc.  
153. Tmt. B. Shathya, MCA., M.Phil., Ph.D.

### **DEPARTMENT OF COMMERCE (Hons)**

154. Tmt. I. Lourdes Angeline Abilaksha, M.Com., M.Phil., Ph.D.  
**Head of the Department**  
155. Tmt. T.S.R. Vijay Janani, M.Com., M.Phil.  
156. Tmt. R. Rajarajeshwari, M.Com., M.Phil., MBA (Executive)  
157. Tmt. J. Haripriya, M.Com., M.Phil.  
158. Tmt. A. Immaculate Cynthia, M.Com., M.Phil.

### **DEPARTMENT OF MATHEMATICS WITH COMPUTER APPLICATIONS**

159. Tmt. K. Prasanna Lakshmi, M.Sc., M.Phil.  
**Head of the Department**  
160. Tmt. S. Vasanthi, M.Sc., M.Phil.  
161. Tmt. M.R. Rathika, M.Sc., M.Phil.  
162. Tmt. A. Monisha, M.Sc., B.Ed., M.Phil.  
163. Tmt. G. Sandhya, M.Sc., M.Phil.

### **DEPARTMENT OF ACCOUNTING AND FINANCE**

164. Tmt. M. Jeyanthi, M.Com., M.Phil., M.B.A., M.Ed., Ph.D.  
**Head of the Department**  
165. Tmt. P. Yamini, M.Com., M.Phil.  
166. Selvi R. Mahashree, M.Com.  
167. Tmt. S. Vaishnavi, M.Com.  
168. Selvi S. Sridevi, M.Com.

**DEPARTMENT OF MASTER OF BUSINESS  
ADMINISTRATION & HRM**

169. Tmt. D. Gomathy, B.Sc., M.B.A., M.Phil., PGDLA., Ph.D.  
**Head of the Department**

170. Tmt. Jayalakshmi Pandian, B.A., M.B.A., M.Phil., Ph.D.

171. Tmt. A. Joy, B.E., M.B.A., M.Phil., Ph.D.

172. Tmt. N. Zabina, B.Com., M.B.A., M.Phil.

173. Tmt. J. Srilekha, M.B.A., M.Phil., Ph.D.

**DEPARTMENT OF MASTER OF COMPUTER  
APPLICATION**

174. Tmt. A. Josephine Anitha, B.Sc., MCA., M.Phil.  
**Head of the Department**

175. Tmt. R. Devikala, B.Sc., MCA., M.Phil.

176. Tmt. U. Shantha Visalakshi, MCA., M.Phil., Ph.D.

177. Tmt. D. Sophia Navis Mary, MCA., M.Phil.

178. Tmt. R. Radha, MCA., M.Tech.

**MBA / MCA PROGRAMMER**

179. Tmt. G. Latha, M.C.A., M.E.

**MBA / MCA LIBRARIAN**

180. Tmt. M. Prema, B.Sc., MLIS., M.Phil., PGDLAN

**DIRECTRESS OF PHYSICAL EDUCATION**

181. Tmt. Selvam, M.A., M.PED., M.Phil., Ph.D.

**LIBRARIAN**

182. Tmt. R. Karpagam, B.Com., MLIS., Ph.D.

183. Tmt. N. Thilakavathy, B.A., MLIS., M.Phil.

**SYSTEM ADMINISTRATOR**

184. Tmt. S. Kavitha, B.Tech.

## **CONTROLLER OF EXAMINATIONS**

Tmt. R.K. Maya, M.A., Ph.D.

## **ADDITIONAL CONTROLLER OF EXAMINATIONS**

Tmt. M. Jeyanthi, M.Com., M.Phil., M.B.A., M.Ed., Ph.D.

## **DEAN OF RESEARCH**

Tmt. Ezhilarasi Hilda Stanley, M.Sc., M.Phil., B.Ed., Ph.D.

## **DEAN OF ACADEMICS**

Tmt. M. Sujatha, M.Sc., M.Phil., Ph.D.

## **DEAN OF STUDENTS**

Tmt. Anusha Balasingh, M.Sc., M.Phil., Ph.D. FIAAM

## **DIRECTOR - CENTRE FOR WOMEN'S STUDIES**

Tmt. P. Padmini, M.A., M.Phil., Ph.D., M.A., (MCJ), M.Ph.Y (Journalism)

## **CO-ORDINATOR – INTERNAL QUALITY ASSURANCE CELL**

Selvi. M. Latha Kumari, M.A., M.Phil., Ph.D.

## **CO-ORDINATOR – UGC CELL**

Tmt. M. Vijaya, M.Sc., M.Phil.

## **MEDICAL OFFICER**

Dr. Tmt. N. Thenmozhi, M.B.B.S.

## **DIRECTOR – PLACEMENT CELL**

Tmt. Gomathy S, M. Sc., M.B.A.

## **STUDENT COUNSELLOR**

1. Ms. Vanitha Raj. W, M.Sc (Counselling Psychology)
2. Ms. Soundaryaa. R, MSW

## SUPPORTING STAFF

1. Tmt. P. Alamelu Padmavathi, M.Com. Jr. Assistant
2. Tmt. R. Divya, B.A., Jr. Assistant
3. Thiru P. Veeraraghavan, DCTN Jr. Assistant
4. Tmt. M. Kalaivani, BBA., Jr. Assistant
5. Mr. T. Sasikumar Jr. Assistant
6. Mrs. G. Angel Jr. Assistant
7. Tmt. S. Suresh Kumar, B.Com., CS Jr. Assistant
8. Tmt. K. Lokeshwari, B.A., DCA Jr. Assistant
9. Tmt. P. Annapurna Devi, B.Com., PGDCA Jr. Assistant
10. Tmt. R. Priyadharsini, B.Com. Jr. Assistant
11. Tmt. N. Suguna, M.Sc., C.M.L.T. Lab Technician
12. Tmt. K. Muthulakshmi, D.E.C.E., Lab Technician
13. Tmt. D. Divya, B.Sc. Lab Technician
14. Tmt. R.Iyswariya Devi, B.Sc. Lab Technician
15. Thiru. S. Chandrasekar, D.C.A., Lab Assistant
16. Thiru P. Dhayalan, B.A., Lab Assistant
17. Thiru C. Desingh Lab Assistant
18. Thiru P. Pandian, DOAC Lab Assistant
19. Thiru. Anand Ambedkar Lab Assistant
20. Thiru S. Babu Lab Assistant
21. Thiru S. Arun Kumar Lab Assistant
22. Thiru P. Arun Lab Assistant
23. Thiru M. Vinoth Lab Assistant
24. Thiru S. Rajkumar Office Assistant
25. Thiru T. Srinivasan Office Assistant
26. Thiru A. Sakthivel Office Assistant
27. Thiru R. Murugan Office Assistant
28. Thiru D. Saravanan Office Assistant
29. Thiru D. Ravi Office Assistant
30. Thiru. E. Gurumoorthy Lift Operator
31. Thiru. K. Balaji, M.Sc., HDCHN,  
Dip. In AVID Media Centre  
Instructor
32. Selvi P.S. Devi, B.Sc., D.M.L.T., Lab Technician
33. Tmt. M. Shyamala, B.Sc., D.M.L.T., Lab Assistant
34. Tmt. R. Punitha, B.Sc., Lab Assistant
35. S. Pavithra, B.A., Lab Assistant
36. R. Revathi, B.Sc., Lab Assistant

## **TRUST STAFF**

Thiru. S. Baskaran, B.A., (CS) M.B.A., - **Manager, Administration**

Tmt. Yasodha Vijayakumar-**Finance Officer**, B.Com., MFM.,  
ICWA., INTER

### **Accounts Assistants**

1. Tmt. S. Devika, M.A.,
2. Tmt. S. Radha, M.B.A.,
3. Tmt. V. Amudha, M.A.,
4. Thiru K. Baskaran, M.Com.,
5. Thiru. E.V. Logachandar, M.Sc.,

### **PA to Principal**

1. Tmt. G. Hyacinth, M.B.A.,

### **Lab Technician**

1. Tmt. S. Muthurani, M.A., D.C.A.,
2. Ms. Chandra Vardhini .G, M.Sc.,

### **Lab Assistants**

1. Thiru G. Venkatesan
2. Thiru K. Saravanan
3. Thiru J. Magesh, DCAS
4. Thiru P. Deepan Kumar
5. Selvi S. Sathya Priya
6. Thiru K. Madhankumar
7. Thiru K. Tamilarasan
8. Thiru R. Vineeth
9. Thiru. N. Sampath

### **Office Assistants**

1. Thiru J. Vijayakumar
2. Thiru V. Somu
3. Thiru D. Pradeep
4. Thiru D. Vasanth Raj

## **General Library**

### **Library Assistants**

1. Tmt. M. Kumudha, D.C.A.,
2. Tmt. P. Rani, M.A., M.Phil., B.L.I.S.,

### **Internet Incharge**

1. Tmt. C. Bhuvaneswari, M.A., D.G.A.,

### **Library Attenders**

1. Thiru. Ranjith Kumar
2. Mrs. R. Rani Esther

### **Sweepers**

- |                           |                             |
|---------------------------|-----------------------------|
| 1. Tmt. S. Vatsala        | 2. Thiru R. Maniarasan      |
| 3. Tmt. M. Maria Sumathy  | 4. Thiru T. Kasinathan      |
| 5. Thiru R. Arokia Raj    | 6. Tmt. P. Dhanam           |
| 7. Tmt. M Saroja          | 8. Tmt. P. Pencilamma       |
| 9. Tmt. T. Chenchilakshmi | 10. Thiru N.P. Harikrishnan |
| 11. Thiru S. Raji         | 12. Thiru A. Wilson         |
| 13. Tmt. A. Swatham       | 14. Tmt. K. Selvi           |
| 15. Thiru Dillibabu       | 16. Tmt. P. Fathima         |
| 17. Tmt. A. Varalakshmi   |                             |

### **Creche Assistant**

1. Tmt. S. Neelavathi
2. Tmt. N. Rani

### **House Keeping Supervisors**

1. Thiru. S. Rajasekar
2. Thiru T. Rajendran

### **Gardener**

Thiru M. Sami Durai

### **Car Driver**

Thiru S. Narasimhan

### **Office Assistant - Driver**

Thiru S. Madhan Kumar

### **Marker**

Thiru V. Suresh



### **Watchmen**

1. Thiru. P. Annadurai
2. Thiru. Shantha Kumar
3. Thiru. K. Viswanathan

### **Bus Drivers**

1. Thiru. N. Nirmalkumar
2. Thiru. R. Boominathan
3. Thiru. K. Arumugam
4. Thiru. K. Viswanathan
5. Thiru. K. Elango

### **Electrician / Plumber**

1. Thiru N.S. Gopalasamy

## **CONTROLLER OF EXAMINATIONS OFFICE STAFF**

1. Thiru. P. Visveswaran, BSc., PGDCA
2. Thiru. S. Suresh, MCA
3. Tmt. V. Nirmala, B.A., DCA
4. Selvi R. Chitra, M.A., DCA
5. Tmt. S. Kundavi, M.A., M.Phil.
6. Tmt. L. Dhanalakshmi, B.Com., DCP., DCA
7. Thiru. A.M. William Moses, Dip. in AC Mechanic
8. Selvi. M. Poornima BCA.,
9. Tmt. K. Rajeswari, BCA.,
10. Tmt. Sneha R.Marla, DCA., DCP.,
11. Thiru J. Hari

## **ADMISSION AND WITHDRAWAL**

- ® Candidates for admission to the first year of the UG Programme should have passed the Higher Secondary Examination or any other equivalent thereto accepted by the Syndicate, University of Madras.
- ® All candidates should submit the Transfer Certificate in original from the Institution last attended.
- ® Candidates from CBSE should produce Migration Certificate.
- ® Candidates from other States should produce Eligibility Certificate from University of Madras.
- ® Candidates from other countries should produce Migration Certificate and also Recognition Certificate from University of Madras.
- ® A student admitted after the beginning of a Term should pay the fee for the whole Term.
- ® Students who are found to have obtained admission by producing false documents will be dismissed with forfeiture of all fees paid.
- ® If a student who has duly paid her fees leaves the college, she will be provided with the Transfer Certificate on application.

## **ATTENDANCE AND DISCIPLINE**

- ® Every student is issued an Identity Card which should be worn compulsorily in the campus.
- ® College fees and Examination fees must be paid on due dates, failing which the names will be removed from the College register. Payment of fees is to be made only online.
- ® No student shall absent herself from the College without prior permission. Students taking leave are required to update their absentee notebook with the signature of the Class teacher and the Head of the Department.
- ® Students taking leave for more than three days have to produce relevant document to substantiate the reason for taking leave. Student taking leave for more than 3 days on medical ground, should produce Medical Certificate on the day of return to the college.
- ® A student, if absent without prior permission for any part of the forenoon or afternoon session will be considered as absent for half a day.
- ® Students are not permitted to leave the College during college hours without the prior permission of the Head of the Department or the Principal.
- ® A minimum of 75% attendance is compulsory for appearing for the End-Semester Examinations.
- ® Leave Application for students residing in Hostel should be countersigned by Deputy Warden.
- ® Parents of the hostel students are advised to keep in touch with the hostel warden periodically.
- ® Every student shall wear modest dress appropriate for an academic institution.
- ® Prior permission of the concerned authority is necessary for the students to represent the College at outside forums.

- ® Sale of tickets or collection of money for any purpose in the College strictly requires prior permission of the Principal.
- ® Kanchi Hotel, Shivalaya Buildings and Wellington Estate are out of bounds for the students of the College.
- ® Use of Cellular Phone is strictly forbidden in the College campus. College is not responsible for the loss of mobile phones.
- ® Wearing of helmets and valid licence are compulsory for two wheeler riders.
- ® Students should keep the campus clean. Littering of the campus is prohibited.

### **GENERAL INFORMATION**

- ® The College works from 11.30 am to 4.00 pm with Lunch break between 1.30 pm and 2.00 pm on day order system.
- ® Every student on the College Roll is assigned a Faculty (Mentor) whom she can consult on matters requiring guidance.
- ® Periodic tests will be conducted by the College on the dates specified in the College Calendar, which form a part of the Continuous Assessment.
- ® Choice Based Credit System is followed for both UG and PG Programmes.
- ® Certificate Courses are offered by the Departments for all UG students and Extra Credit is provided for the Certificate Course.
- ® Value Education and Environmental Studies are part of the curriculum for the UG students in order to make them socially responsible citizens.
- ® The Extension Activities such as NCC, CSS, RRC, Rotaract Club, E-Cell, Environment Club, Consumer Club & ENACTUS kindle social sensitivity amongst the students.

## **STUDENT SUPPORT SERVICES**

- ® Three College buses serve the needs of Aided and Self-Supporting students covering the following areas : Dasaprakash, Purasaiwakkam, Kellys, Kilpauk Garden, Ayanavaram, Villivakkam, I.C.F. Anna Nagar East & West, Thirumangalam, Shanthi Colony, Mogappair, Arumbakkam and Koyambedu.
- ® Hostel facilities are available for UG, PG & Research students.
- ® Ramps are fixed, toilets have been re-designed and elevators have been provided to meet the needs of the Physically challenged.
- ® College Book Store supplies text books and note books to the students.
- ® Water coolers / purifiers at various vantage points supply clean water.
- ® College is provided with WiFi connectivity and Internet facility is also available in the Library.
- ® Photo Copying facility is available in the Library and also in both the Campuses from 9.30 am to 6.00 pm.
- ® Indian Overseas Bank, Women Entrepreneur Branch, operates between 10.00 am and 4.00 pm in the college campus.
- ® Canteen in both the Campuses provides vegetarian food during working days.
- ® Student Development Centre and Yoga Centre are setup for the holistic wellbeing of the students.
- ® Medical Officer and Student Counsellors are available during the College working hours for consultation.
- ® Railway and MTC Bus Passes are also issued to the students.
- ® Educational Tours are organized by various departments.

## **LIBRARY GUIDELINES**

- ® The Library Timings on all working days is between -  
7.30 am to 5.00 pm.
- ® The students of the College are members of the College library and can borrow books against their College ID Card.
- ® Students can keep the books for a week and return them on the due date specified.
- ® The book can be renewed twice for similar period if no demand is found for the book.
- ® Lost books will have to be replaced. The Librarian has the power to penalize and refuse access to the books to any student who is found damaging the property of the Library.
- ® Late return entails a fine of Re. 1/- per day. Sundays and other holidays are excluded from fine.
- ® Library Deposit will be refunded at the end of the Course on production of No Due Certificate issued by the Librarian.

## CO-CURRICULAR ACTIVITIES

Every student on the College Roll is a member of the College Union. The College Union co-ordinates the participation of the students in extra curricular activities.

Various associations of our College are :

<b>ARUVI</b>	Tamil Association
	Tamil Dramatics Association
<b>ATHENA</b>	English Association
	English Dramatics Association
<b>SATRANGI</b>	Hindi Association
<b>MADHULIHA</b>	Sanskrit Association
<b>L'AUBE</b>	French Association
<b>COMET</b>	Commerce Association
<b>NUMERA</b>	Mathematics Association
<b>ETHICS</b>	Corporate Secretaryship Association
<b>ECOLADES</b>	Economics Association Planning Forum
<b>CHIP - IN</b>	Computer Science Association
<b>LANTANA</b>	Plant Biology & Plant Biotechnology Association
<b>BANCO</b>	Bank Management Association
<b>REPLICA</b>	Biochemistry Association
<b>MICROFEST</b>	Microbiology Association
<b>IDARA</b>	BBA & HRM Association
<b>PARADIGM</b>	M.B.A. Association
<b>NUTRIFEST</b>	Nutrition & Dietetics Association
<b>PSYNERGY</b>	Psychology Association
<b>RIPPLES</b>	Physics Association
<b>ANVAYA</b>	M.C.A. Association
<b>MEDIOS</b>	Visual Communication Association
<b>JAGRITI</b>	Human Rights Association
<b>REGAALIYA</b>	B.C.A. Association
<b>FINANCIA</b>	Accounting & Finance
<b>AURORA</b>	Commerce (Honors)
<b>KRYPTA</b>	Mathematics with Computer Applications
<b>DRISHYA</b>	Journalism and Communication Association
<b>CORNUCOPIA</b>	Library Association

These associations promote co-curricular activities such as debate, quiz, oratorical contests and other related competitions. Eminent Personalities in the respective fields are invited to address the students. Each Department releases an Annual Magazine to enhance the creativity the of the students.

The Students Union organizes Co-Curricular and Cultural events at Inter-Departmental (Aarambh & Maithri) and National level (Srishti) and also co-ordinates the participation of the students in the competitions held by other institutions at District, State and National level.

### **LEAGUES**

1. Alumnae Connect
2. Campus Innovations
3. Disaster Mitigation
4. Green Enviro
5. Holistic Well-being
6. Social Works
7. Swachh Ethiraj
8. Website

### **CLUBS**

1. Arts
2. Debate
3. English Teatro
4. Tamil Teatro
5. Literary
6. Quiz
7. Film Appreciation and Photography
8. Fine Arts
9. Astronomy Club (Physics)
10. Human Rights Club

## **EXTENSION AND EXTRA CURRICULAR ACTIVITIES COMPULSORY CREDIT**

SPORTS	-	(Aided & Self - Supporting)
YRC	-	(Aided)
RRC	-	(Self - Supporting)
NCC	-	(Aided & Self - Supporting)
NSS	-	(Aided & Self - Supporting)
CSS	-	(Self - Supporting)
ROTARACT	-	(Aided & Self - Supporting)

## **ADDITIONAL CREDIT**

E-Cell  
Consumer Club  
Enactus



## PROGRAMME OF STUDY

PROGRAMME	BATCH STRENGTH	YEAR AFFILIATION
B.Com.	3 x 70	1981 - 1982
B.A. English	1 x 70	1986 - 1987
B.Sc. Mathematics	1 x 70	1989 - 1990
B.Com Corporate Secretaryship	2 x 70	1990 - 1991
B.Sc. Computer Science	2 x 50	1990 - 1991
B.Com. Bank Management	2 x 70	1994 - 1995
B.Sc. Biochemistry	1 x 50	1997 - 1998
B.Sc. Microbiology	1 x 50	1997 - 1998
B.B.A.	1 x 70	1998 - 1999
B.Sc. Psychology	1 x 50	2003 - 2004
B.A. Business Economics	1 x 70	2005 - 2006
B.A. English Literature and Communication	1 x 70	2005 - 2006
B.Sc. Clinical Nutrition & Dietetics	1 x 30	2005 - 2006
B.Sc. Visual Communication	1 x 50	2006 - 2007
B.C.A.	1 x 50	2010 - 2011
B.Com. (Hons.)	1 x 40	2012 - 2013
B.Sc. Mathematics with Computer Applications	1 x 60	2012 - 2013
B.Com Accounting and Finance	1 x 70	2016 - 2017
M.Sc. PBPB	1 x 20	1993 - 1994
M.Sc. Mathematics	1 x 40	1994 - 1995
M.B.A.	1 x 60	1997 - 1998
M.Com. Corporate Secretaryship	1 x 25	1998 - 1999
M.C.A.	1 x 45	1999 - 2000
M.A. Human Right & Duties Education	1 x 30	2002 - 2003
M.Sc. Foods and Nutrition	1 x 15	2003 - 2004
M.Sc. Physics	1 x 16	2004 - 2005
M.Sc. Applied Microbiology	1 x 26	2006 - 2007
M.Sc. Biochemistry	1 x 26	2006 - 2007
M.Sc. Applied Psychology	1 x 26	2020 - 2021
M.Com. Banking and Insurance Management	1 x 40	2013 - 2014
M.A. Journalism and Communication	1 x 20	2014 - 2015
M.Com.	1 x 40	2016 - 2017
M.A. Human Resource Management	1 x 40	2020 - 2021
MA English	1 x 40	2022 - 2023
M.Phil. Physics	6 full time	2009 - 2010
M.Phil Nutrition & Dietetics	4 full time & 2 part time	2009 - 2010
M.Phil Computer Science	12 full time	2014 - 2015

**VALUE ADDED COURSES**  
(for UG Students)

S.No.	DEPARTMENT	NAME OF THE COURSE
1.	English	1. Public Speaking and Presentation Skills 2. English for Competitive Examinations
2.	Mathematics	1. Analytical Skills for Competitive Examinations 2. Quantitative Aptitude
3.	Business Economics	1. Data Analysis using SPSS 2. Stock Market Investment for Beginners
4.	Bank Management	1. EDGE - Entrepreneurship Demystified 2. Know your Investment
5.	Biochemistry	1. Health Care Documentation - I 2. Health Care Documentation - II
6.	Microbiology	1. Medical Laboratory Technology- Hematology and Phlebotoms 2. Medical Laboratory Technology- Microbiology and Biochemistry
7.	Psychology	Dyslexia
8.	BCA	1. Web Designing 2. Data Analysis and Visualization using Microsoft Office
9.	Mathematics with Computer Applications	1.General Aptitude for Competitive Examinations 2. MS- Office
10.	Physics	1. MATLAB for Beginners 2. GOLD software for Molecular Docking
11.	Journalism and Communication	1. Digital Editing 2. Commercial Photography 3. Citizen Journalism
12.	Clinical Nutrition and Dietetics	Food safety and Product Development

13. Commerce	<ol style="list-style-type: none"> <li>1. Goods And Services Tax(GST)</li> <li>2. Supply Chain Management</li> <li>3. Entrepreneurship Development</li> <li>4. Career Competency Development</li> </ol>
14. Commerce (Hons.)	<ol style="list-style-type: none"> <li>1. Digital Marketing</li> <li>2. Advanced Excel and Power Query.</li> </ol>
15. Corporate Secretaryship	<ol style="list-style-type: none"> <li>1. Introduction to SPSS</li> </ol>
16. Accounting and Finance	<ol style="list-style-type: none"> <li>1. Filing of Income Tax Returns for Individuals</li> <li>2. Digital Marketing</li> </ol>
17 Visual Communication	<ol style="list-style-type: none"> <li>1. Layout Design</li> <li>2. Lifestyle Photography</li> </ol>
18. PBPB (Only for PG Students)	<ol style="list-style-type: none"> <li>1. Seed Technology and Intellectual Property Rights</li> <li>2. Applied Algology</li> </ol>
19. Human Rights (Only for PG Students)	<ol style="list-style-type: none"> <li>1. Child Rights and Child Protection</li> <li>2. Intellectual Property Rights-Theory and Practise</li> </ol>
20. Computer Science	<ol style="list-style-type: none"> <li>1. Full Stack Development</li> <li>2. 2D Animation Using Flash</li> </ol>
21. BBA HRM	<ol style="list-style-type: none"> <li>1. Employability Skills for Managers</li> <li>2. Event Management</li> </ol>

## GOVERNMENT SCHOLARSHIPS

<b>Name of the Scholarship</b>	<b>Eligibility</b>
1. SC / ST Post Matric	Below Rs. 1,00,000/-
2. SC / ST Free Education	Income Certificate not required
3. SC / ST Christian	Income Certificate not required

## SCHOLARSHIPS

### GENERAL

SS/SCH/GEN/1	Sri V.L. Ethiraj Estate and merit Scholarship to the Undergraduate and Postgraduate students.
SS/SCH/GEN/2	Prof. Vasanthi Devi Kothandaramaswami Scholarship for one student from each UG Dept. (14 Depts) on merit-cum-means basis, instituted by Prof. Vasanthi Devi, Former Principal (2010).
SS/SCH/GEN/3	The Alumnae Association Endowment Scholarship to be awarded to one UG/PG student from each department on merit-cum-means basis.
SS/SCH/GEN/4	Thiru G. Neelagantan and Tmt. N. Kuppammal Scholarship instituted by Dr. Tmt. Kasturi Jayaraman, former Vice Principal (SS) and Head, Department of Zoology (2013) in honour of her parents, on merit-cum-means basis, for 3 UG students - one from Humanities, Sciences and Business Studies disciplines each.
SS/SCH/GEN/5	Professor Dr. Selvi. T.K. Alamelu Endowment Scholarship in memory of Dr. T.K. Alamelu, former Head, Department of Chemistry for one student from each Science Dept (Under Graduate and Post Graduate) of the Self Financing Stream, instituted by Dr. Tmt. Radha Ramachandran, former Head, Department of Chemistry (2013).
SS/SCH/GEN/6	PTA Endowment Scholarship
SS/SCH/GEN/7	Smt. Seethalakshmi Shanmugasundaram Endowment for a retiring non-teaching staff (Aided & Self-supporting) instituted by Dr. Mrs. Shyamala Kanakarajan, Associate Professor & Head, Department of Plant Biology & Plant

Biotechnology and Vice-Principal (General) in honour of her mother (2014).

SS/SCH/GEN/8 Joshna Chinappa scholarship (alternate Aided & SS) to Dept as in calendar order, starting with English (2014 - 2015).

SS/SCH/GEN/9 Scholarship for blind students.

SS/SCH/GEN/10 Shri. S.K. Seshan Memorial Scholarship for the payment of end semester examination fees to Economics major students Aided and Self Supporting streams awarded to two students, representing the college in any of the sports activities at the State National or International levels instituted by Prof. S. Radha, Former Reader, Department of Economics (2009 -2010).

### **BANK MANAGEMENT**

SS/SCH/BM/1 A.P. Kuppu Rao and K.S. Madhava Rao Endowment Scholarship for two students from the Department of Bank Management on merit - cum - means basis, instituted by Dr. M. Jeyanthi, Sr. Asst. Prof. Dept. of Bank Management (2010).

SS/SCH/BM/2 Thiru. T.S. Parasuraman Scholarship for a deserving student from M.Com. Banking and Insurance Management on merit-cum-means basis instituted by Principal Dr. Tmt. Jothi Kumaravel (2014).

### **HUMAN RIGHTS AND DUTIES EDUCATION**

SS/SCH/HRDE/1 Dr. Tmt. Shantha Pattabiraman Scholarship for 1 PG Student of Human Rights department on merit - cum-means basis, instituted by her son Mr. D.P. Venkatesh and employees of M Portal INC (2011 - 2012).

### **ROTRACT**

SCH/ROT/2 Rotaract scholarship instituted by the Board member of the Rotaract club of Ethiraj College for UG second year students for self supporting stream on merit- cum-means basis to commemorate 70th year of our college.

## GRADUATION DAY MEDALS

### GENERAL

SS/CN/M/GEN/1 Ethiraj College Silver Jubilee Endowment Medal, instituted by the staff and students of the Self - Supporting stream 2005 - 2006, for proficiency in B.A. English, B.A.E.C.S., B.A. Business Economics, B.Com., B.Com. C.S., B.Com., B.M., B.B.A., B.Sc. Computer Science, Microbiology, Biochemistry, Mathematics, Clinical Nutrition & Dietetics, Psychology, Visual Communication, Mathematics with Computer Applications, B.Com. (Hons), B.Com. (A & F), B.C.A., M.Sc. Food & Nutrition, Mathematics, Physics, Plant Biology & Plant Biotechnology, M.Com. C.S., M.B.A., M.C.A., M.Sc., Biochemistry, M.Sc., Applied Microbiology, M.Com. (Banking & Insurance Management), M.A. Journalism and Communication, M.Com., M.A., HRM, M.S.c., Applied Psychology.

### COMMERCE

SS/CN/M/COM/1 Thiru. C.P. Rami Reddy Endowment Medal instituted by Ms. Swetha Reddy, B.Com student (Batch 2002 - 2005), for proficiency in B.Com Examination in the Self-supporting stream.

### COMMERCE (HONS)

SS/CN/M/HON/1 Thiru T. Anjan Kumar Endowment medal for Proficiency in B.Com. (Hons) instituted by Ms. Sudeshna T, faculty, Department of Commerce (SS).

### MATHEMATICS

SS/CN/M/MAT/1 Tmt. Nancy Vedanayagam Gold Medal for proficiency in the B.Sc. Mathematics instituted by staff and students of Mathematics.

### CORPORATE SECRETARYSHIP

SS/CN/M/CS/1 Medal for proficiency in B.Com C.S. class in the Autonomous Examination, endowed by Mandaveli Benefit Fund Limited.

### PBPB

SC/CN/M/PBPB/1 The Ms. Eva Matthew Gold Medal for highest Mark in the End Semester Examinations for M.Sc. PBPB student, instituted by Mrs. Kesar Chander, former Principal and Head, Department of Botany.

SC/CN/M/PBPB/2 The Ethiraj Gold Medal endowed by Cine Artiste Suman for the best outgoing student in the M.Sc. PBPB End Semester Examination.

### **COMPUTER SCIENCE**

SC/CN/M/CSC/1 The G.S. Net Services Medal for proficiency in III B.Sc. Computer Science class, awarded to the student securing highest marks in Major and Allied.

### **PSYCHOLOGY**

SC/CN/M/PSY/1 Shriram Educational Trust medal for a student securing the highest percentage of marks in Major and Allied papers in B.Sc. Psychology.

### **HUMAN RIGHTS & DUTIES EDUCATION**

SC/CN/M/HRDE/1 Ethiraj College Alumne Association (ECAA) Medal for proficiency in M.A. Human Rights & Duties Education

### **MBA**

SC/CN/M/MBA/1 Thiru. V.L. Govindaraj Memorial Medal awarded to the student securing the highest marks in Marketing in the Autonomous Examination in the M.B.A. Class, instituted by Dr. Tmt. Lalitha V. Iyer.

SC/CN/M/MBA/2 Thiru. V.L. Varadaraj Memorial Medal awarded to the student securing the highest marks in Finance in the Autonomous Examination in the M.B.A. Class, instituted by Dr. Tmt. Lalitha V. Iyer.

SC/CN/M/MBA/3 The Sundaram Family Charitable Trust awarded to the Student Securing highest marks in Human Resource in the Autonomous Examination in MBA class, instituted by Tmt. P.G. Bhauvanalatha, former faculty of MBA Department.

### **MCA**

SC/CN/M/MCA/1 The Ethiraj Medal for proficiency in MCA class.

## GRADUATION DAY PRIZES

### GENERAL

SS/CN/PZ/GEN/1 Dr. Tmt. M. Thavamani endowment Prize, instituted by the Staff of the Department of Business Studies (2011) for the student securing Highest mark in a course Entrepreneurial Development in B.Com. (General), B.Com. (C.S.), B.Com. (B.M.) and BBA.

### ENGLISH

SS/CN/PZ/ENG/1 Mrs. Arjun Endowment Prize for the outstanding student of English Literature.

SS/CN/PZ/ENG/2 Tmt. Vasantha Srinivasan Prize (Books) for highest marks in American Literature, instituted by staff & students of the Dept. of English.

### COMMERCE

SS/CN/PZ/COM/1 Tmt Lakshmi and Thiru C.N. Balakrishnan endowment cash prize for proficiency in M.Com. (Self Supporting) class instituted by Dr. Sharmila Radhakrishna, Associate Professor, Department of Commerce (Self Supporting) in honour of her parents.

### COMMERCE HONS

SS/CN/PZ/HON/1 Thiru. K. Mani cash prize for proficiency in B.Com. (Hons.) class instituted by Principal Dr. Tmt. Jothi Kumaravel (2014).

### MATHEMATICS

SS/CN/PZ/MAT/1 Tmt. T.A. Vallirathinam and Tmt. T.R.S. Rama Lakshmi Endowment prize for standing first in the End Semester examination in the M.Sc. Maths Class, endowed by Prof. Dr. T.A. Kumararaj (1999).

### BUSINESS ECONOMICS

SS/CN/PZ/ECO/1 Tmt. Visalakshmi and Thiru V.N. Varadharajan Prize, instituted by Dr. Shantha Ramamurthy, former Head, Dept. of Economics in honour of her parents, for highest marks in Macro Economics.  
**- Temporarily suspended.**

SS/CN/PZ/ECO/2 Tmt. V. Abayambal Endowment cash prize, instituted by the staff & students of the department of Economics for Fiscal Economics.



SS/CN/PZ/ECO/3 Dr. Tmt. V. Renuka Devi Prize in Econometrics instituted on the occasion of her being conferred the Malcolm Adiseshiah Award for the Best Teacher in Economics (2009) is presented to the UG Economics (Aided) and UG Business Economics (Self Supporting) students securing the highest marks in Econometrics in the end semester Examination conducted by the college.

### **PBPB**

SS/CN/PZ/PBPB/1 Dr. Hema Balram Prize for a M.Sc. PBPB student who secures the First mark in elective papers in the M.Sc. End Semester examination.

### **BANK MANAGEMENT**

SS/CN/PZ/BM/1 The I.O.B. Ethiraj College extension counter Silver Jubilee Prize for proficiency in the B.Com. B.M. Class.

### **BBA**

SS/CN/PZ/BBA/1 Tmt. Meena Bai Ratanchand Bathija Endowment Prize for a student securing highest mark in the B.B.A. Degree Examination.

SS/CN/PZ/BBA/2 Tmt. V. Rajamani Endowment prize for a student securing highest mark in the Final year project in BBA degree examination.

### **PSYCHOLOGY**

SS/CN/PZ/PSY/1 Shriram Educational Trust prize (Book) for a student, securing the second rank in B.Sc. Psychology.

### **CLINICAL NUTRITION & DIETETICS**

SS/CN/PZ/CND/1 Dr. Parvathi Venkataraman endowment prize, instituted by Selvi. Sandhya Venkataraman, for passed out M.Sc. Food and Nutrition student securing the highest mark in the End Semester examinations.

## COLLEGE DAY MEDALS

### GENERAL

- SS/CL/M/GEN/1 Union Medal for proficiency in the Self - Supporting Stream in B.A. English, English Literature and Communication, Business Economics, B.Com., B.Com. (Hons.), B.Com. C.S., B.Com. B.M., B.B.A., B.Sc. Mathematics, Mathematics with Computer Applications, Computer Science, Microbiology, Biochemistry, Clinical Nutrition & Dietetics Psychology, Visual Communication, B.C.A., B.Com. (A & F), M.Sc. Plant Biology & Plant Biotechnology, M.Sc. Mathematics, M.Com. C.S., M.Sc., Food and Nutrition, Physics, Applied Microbiology Biochemistry, M.Com. Banking and Insurance Management, M.A. Journalism & Communication, HR&DE, M.Com., M.A.HRM, M.A., HRM, M.S.c., Applied Psychology.
- SS/CL/M/GEN/2 Dr. Tmt. Indhrani Sridharan Medal for the most outstanding student in the Self - Supporting Stream.
- SS/CL/M/GEN/3 Dr. Tmt. Kausalya Moorthy and Justice M.N. Moorthy Endowment medal for a student securing the highest mark in M.Sc. Applied Microbiology, M.Sc. Food & Nutrition, M.Sc. Biochemistry and B.Sc. Clinical Nutrition.
- SS/CL/M/GEN/4 Rotaract Medal for social service to the Joint President of Student's Union in the Self-Supporting stream, instituted by Rotaract Club of Ethiraj College for Women.

### ENGLISH

- SS/CL/M/ENG/1 The Tmt. Shanta Lionel Medal, instituted by III B.A. English students of the Self - Supporting Stream, for allied subjects.

### COMMERCE

- SS/CL/M/COM/1 Dr. Tmt. K. Nirmala Prasad Endowment Medal for the outstanding student of Commerce instituted by the staff & students of Dept. of Commerce.

SS/CL/M/COM/2 Tmt. Parimala Krishnaswamy Endowment Medal for best outgoing student of Department of Commerce, instituted by Dr. Tmt. K. Nirmala Prasad, former Head, Department of Commerce.

### **PBPB**

SS/CL/M/PBPB/1 The Molahalli Sri Ranga Rao Medal for the outstanding student of the I M.Sc. PBPB End Semester Examination, Endowed by Selvi M. Prema.

### **MICROBIOLOGY**

SS/CL/M/MB/1 The Professor M.S. Ramachandran's Medal instituted by Postgraduate student of Prof. M.S. Ramachandran, M.D. for the top scorer in III B.Sc. Microbiology.

### **MBA**

SS/CL/M/MBA/1 The ETHIRAJ medal for proficiency in MBA class.

### **MCA**

SS/CL/M/MCA/1 The ETHIRAJ medal for proficiency in MCA class.

## **COLLEGE DAY PRIZES**

### **GENERAL**

SS/CL/PZ/GEN/1 Thiru G. Neelagantan and Tmt. N. Kuppammal cash award to the staff member (Teaching and Non-Teaching) for 100% attendance during the academic year, instituted by Dr. Tmt. Kasturi Jayaraman former Vice Principal (SS) and Head of Department of Zoology (2013).

### **COMMERCE**

SS/CL/PZ/COM/1 Dr. Mrs. K. Nirmala Prasad endowment prize instituted by G. Jalaja, student of the first batch B.Com. for best all-rounder in B.Com. (SS) final year (2000).

SS/CL/PZ/COM/2 Shri Sultan Chand Trust Endowment Prize for a student securing the highest marks in Five semesters in B.Com. (General).

### **COMMERCE (HONS.)**

SS/CL/PZ/HON/1 Thiru T. Anjan Kumar Endowment Prize instituted by Ms. Sudeshna T, faculty, Department of Commerce (SS) for best all - rounder in B.Com. (Hons.).

### **CORPORATE SECRETARYSHIP**

SS/CL/PZ/CS/1 Dr. Tmt. M. Thavamani, Endowment Prize, instituted by the staff of the Department of Corporate Secretaryship (2001), for the most meritorious Student in Academics, Extra Curricular and Co-curricular activities (Aided & Self-Supporting).

SS/CL/PZ/CS/2 UGP Engineering Private Limited Endowment cash prize instituted by Thiru S. Umapathy for the student securing highest marks in the subject Company Law & Secretarial Practice I & II in B.Com. (CS) SS (2015).

### **BUSINESS ECONOMICS**

SS/CL/PZ/ECO/1 Dr. Tmt. Shantha Ramamurthy Endowment cash prize, instituted by the staff and students of the Dept. of Economics, for Monetary Economics.

SS/CL/PZ/ECO/2 Dr. Tmt. R. Rukmani Endowment cash prize instituted by the staff and students of the Dept. of Economics, for Indian Economy - Problems & Policies.

SS/CL/PZ/ECO/3 Dr. Shantha Thangaraj Cash prize to the students securing the highest marks in Economic thought in each batch of U.G. Programme both in Aided and Self-Supporting streams instituted by Tmt. S. Malini - Associate Professor, Dept. of Economics 2013 - 14.

## **PBPB**

SS/CL/PZ/PBPB/1 Thiru P.R. Thulasingam Endowment cash prize instituted by Tmt. Prema Sampathkumar in honour of her father, to a student securing highest mark in Plant Taxonomy in M.Sc. PBPB (2004).

SS/CL/PZ/PBPB/2 Smt. Seethalakshmi Shanmugasundaram cash prize for a second year M.Sc. Plant Biology & Plant Biotechnology student who secures the highest marks in the I, II & III semester theory papers instituted by Dr. Mrs. Shyamala Kanakarajan, former Associate Professor & Head, Department of Plant Biology & Plant Biotechnology and Vice-Principal (General) in honour of her mother (2014).

## **PHYSICS**

SS/CL/PZ/PHY/1 Dr. Tmt. Shiela Muthunayagam Prize, instituted by staff and students of Physics Dept. 2005, for a student securing the highest mark in I & II Semesters of I M.Sc. Class.

## **BBA**

SS/CL/PZ/BBA/1 Shri Sultan Chand Endowment prize for student securing the highest marks in II & IV semesters in BBA.

## **COLLEGE DAY ROLLING CUPS AND SHIELDS**

### **GENERAL**

SS/CL/RC/GEN/1 Dutto Samivelu Cup for outstanding student in the final year B.A. / B.Sc. / B.Com. / B.B.A. and P.G. Classes in the Self-supporting stream.

SS/CL/RC/GEN/2 Union 2000 - 2001 Trophy for the best Association Secretary.

SS/CL/RC/GEN/3 Union 2000 - 2001 Trophy for Excellence in Cultural Activities.

### **ENGLISH**

SS/CL/RC/ENG/1 Tmt. Kanthi Shenbagaraman Rolling Trophy for a final-year Student outstanding in Curricular and Extra-Curricular activities instituted in 2003 by the staff & students of the Department of English.

## **COMMERCE**

SS/CL/RC/COM/1 Ethiraj Self-Supporting Stream Silver Jubilee (Celebrations) cup to an overall winner in intercollegiate competitions conducted by the Dept. of Commerce, instituted by Dr. K. Nirmala Prasad.

## **NSS**

SS/CL/RC/NSS/1 Dr. Tmt. Kausalya Moorthy and Justice M.N. Moorthy Endowment to sponsor the Blood donation camps conducted by NSS.

## **PLANT BIOLOGY & PLANT BIOTECHNOLOGY**

SS/CL/RC/PBPB/1 Rolling trophy for a winner in inter-classes debate instituted by the M.Sc. Plant Biology and Plant Biotechnology students (2014-2015).

SS/CL/RC/PBPB/2 Rolling cup for a winner in inter-class paper presentation instituted by the M.Sc. Plant Biology and Plant Biotechnology students (2014 - 2015).

## **ENDOWMENT LECTURES**

1. Dr. Mrs. Kausalya Moorthy and Justice M.N. Moorthy Endowment lecture / seminar / conference in medicine / related subjects like Clinical Biochemistry, Immunology, Hormones and Signal Transduction, Medical Bacteriology, Medical Virology, Mycology and Parasitology etc., for students of Nutrition, Biochemistry and Microbiology.
2. Dr. Mrs. Kausalya Moorthy and Justice M.N. Moorthy Endowment lecture / seminar / conference in Banking or Business Law or Company Law or Income Tax for B.Com., B.Com. Corporate Secretaryship and B.Com. Bank Management Students.
3. Dr. Mrs. Nirmala Prasad Endowment Lecture in commemoration of the Silver Jubilee of the Department of Bank Management for B.Com. Bank Management students.
4. Dr. (Tmt.) K. Nirmala Prasad Endowment Lecture endowed by Tmt. Sundari, Commerce Student of B.Com (1975-78) in the year 2000, for Commerce Students.

Date	Day	Order	<b>JULY - 2022</b>	No. of Working Days
1	Fri			
2	Sat			
3	Sun			
4	Mon			
5	Tue			
6	Wed			
7	Thu			
8	Fri			
9	Sat			
10	Sun		Bakrid	
11	Mon			
12	Tue			
13	Wed			
14	Thu			
15	Fri			

Date	Day	Order	<b>JULY - 2022</b>	No. of Working Days
16	Sat			
17	Sun			
18	Mon	I	Founder's Day	1
19	Tue	II		2
20	Wed	III		3
21	Thu	IV	Orientation for II year UG	4
22	Fri	V	Orientation for II year UG	5
23	Sat			
24	Sun			
25	Mon	VI	Orientation for III year UG	6
26	Tue	I		7
27	Wed	II	Orientation for III year UG	8
28	Thu	III		9
29	Fri	IV		10
30	Sat			
31	Sun			



Date	Day	Order	<b>AUGUST - 2022</b>	No. of Working Days
1	Mon	V	Bhavishya	11
2	Tue	VI	Bhavishya	12
3	Wed	I	Orientation - II PG	13
4	Thu	II		14
5	Fri		Varalakshimi Viratham	
6	Sat			
7	Sun			
8	Mon		Founder's Day Holiday	
9	Tue		Muharram	
10	Wed	III		15
11	Thu	IV	Maths & ECRIC International Workshop	16
12	Fri	V		17
13	Sat			
14	Sun			
15	Mon		Independence Day	

Date	Day	Order	<b>AUGUST - 2022</b>	No. of Working Days
16	Tue	VI		18
17	Wed	I	I Years UG Re-opening	19
18	Thu	II		20
19	Fri		Gokulashtami / Krishna Jayanthi	
20	Sat			
21	Sun			
22	Mon	III	Union Inaugural	21
23	Tue	IV	Orientation - I year	22
24	Wed	V		23
25	Thu	VI	Orientation - I year	24
26	Fri	I		25
27	Sat		Orientation - I year	
28	Sun			
29	Mon	II	Red Ribbon Club	26
30	Tue	III	Community Service Scheme	27
31	Wed		Vinayagar Chathurthi	

Date	Day	Order	<b>SEPTEMBER - 2022</b>	No. of Working Days
1	Thu	IV	Online Payment of odd Semester Examination Fees Continuous Assessment Test - I ( II & III Years )	28
2	Fri	V	Continuous Assessment Test - I ( II & III Years )	29
3	Sat			
4	Sun			
5	Mon	VI	Continuous Assessment Test - I ( II & III Years )	30
6	Tue	I	Continuous Assessment Test - I ( II & III Years ) Orientation - I PG	31
7	Wed	II	Continuous Assessment Test - I ( II & III Years )	32
8	Thu		Onam	
9	Fri	III	Continuous Assessment Test - I ( II & III Years ) BBA Association	33
10	Sat		Last date for odd Semester Examination Fees	
11	Sun			
12	Mon	IV	Bharathi Day - Tamil Department	34
13	Tue	V	Journalism Conclave	35
14	Wed	VI	Cornucopia	36
15	Thu	I		37

Date	Day	Order	<b>SEPTEMBER - 2022</b>	No. of Working Days
16	Fri	II		38
17	Sat	III	Union Seminar	39
18	Sun			
19	Mon	IV	EBSCO Orientation R & M Auditions	40
20	Tue	V	Maths Association - Numera	41
21	Wed	VI	Hindi Association	42
22	Thu	I		43
23	Fri	II	BCA Association	44
24	Sat			
25	Sun			
26	Mon	III	Maths with C A - Seminar	45
27	Tue	IV	Commerce Association	46
28	Wed	V	Economics Association	47
29	Thu	VI	Economics Association	48
30	Fri	I	English Association - Athena	49

Date	Day	Order	OCTOBER - 2022	No. of Working Days
1	Sat			
2	Sun		Gandhi Jayanti	
3	Mon		Pooja Holidays	
4	Tue		Saraswathi Pooja	
5	Wed		Vijayadashami	
6	Thu	II	Continuous Assessment Test - I ( I Years)	50
7	Fri	III	Continuous Assessment Test - I ( I Years)	51
8	Sat			
9	Sun		Milad un Nabi	
10	Mon	IV	Continuous Assessment Test - I ( I Years)	52
11	Tue	V	Continuous Assessment Test - I ( I Years)	53
12	Wed	VI	Continuous Assessment Test - I ( I Years)	54
13	Thu	I	Maths & Sanskrit International Conference	55
14	Fri	II	National Service Scheme	56
15	Sat		Union - Sevagar Sangamam	

Date	Day	Order	OCTOBER - 2022	No. of Working Days
16	Sun			
17	Mon	III	Corporate Secretaryship Association	57
18	Tue	IV	Corporate Secretaryship Association	58
19	Wed	V	Aarambh	59
20	Thu	VI	Maithri	60
21	Fri	I	Maithri	61
22	Sat			
23	Sun			
24	Mon		Deepavali	
25	Tue		Deepavali	
26	Wed	II	YRC	62
27	Thu	III	Continuous Assessment Test - II ( II & III Years)	63
28	Fri	IV	Continuous Assessment Test - II ( II & III Years)	64
29	Sat			
30	Sun			
31	Mon	V	Continuous Assessment Test - II ( II & III Years)	65

Date	Day	Order	<b>NOVEMBER - 2022</b>	No. of Working Days
1	Tue	VI	MCA Association Continuous Assessment Test - II ( II & III Years)	66
2	Wed	I	MCA Association Continuous Assessment Test - II ( II & III Years)	67
3	Thu	II	Commerce (Hons.) Association Continuous Assessment Test - II ( II & III Years)	68
4	Fri	III	Tamil Association	69
5	Sat			
6	Sun			
7	Mon	IV	MBA	70
8	Tue	V	Practical Examinations Begin MBA	71
9	Wed	VI	Bank Management Association	72
10	Thu	I	PBPB Association	73
11	Fri	II	PBPB Association	74
12	Sat		Union - Atlantis	
13	Sun			
14	Mon	III	Chemistry International Conference	75
15	Tue	IV	NCC	76

Date	Day	Order	<b>NOVEMBER - 2022</b>	No. of Working Days
16	Wed	V	Continuous Assessment Test - II (I years)	77
17	Thu	VI	Continuous Assessment Test - II (I years)	78
18	Fri	I	Continuous Assessment Test - II (I years)	79
19	Sat			
20	Sun			
21	Mon	II	Continuous Assessment Test - II (I years)	80
22	Tue	III	Continuous Assessment Test - II (I years)	81
23	Wed	IV	Part IV / NME / Soft Skill Exams	82
24	Thu	V	Part IV / NME / Soft Skill Exams	83
25	Fri	VI	Part IV / NME / Soft Skill Exams	84
26	Sat			
27	Sun			
28	Mon	I	Financial Literacy Club	85
29	Tue	II	Viscom Association	86
30	Wed	III	Jagrithi - HRDE Association	87



Date	Day	Order	<b>DECEMBER - 2022</b>	No. of Working Days
1	Thu	IV	RRC - World Aids Day	88
2	Fri	V		89
3	Sat			
4	Sun			
5	Mon	VI		90
6	Tue		Karthigai Deepam	
7	Wed			
8	Thu		End Semester Examinations begin	
9	Fri			
10	Sat			
11	Sun			
12	Mon			
13	Tue			
14	Wed			
15	Thu			

Date	Day	Order	<b>DECEMBER - 2022</b>	No. of Working Days
16	Fri			
17	Sat			
18	Sun			
19	Mon			
20	Tue			
21	Wed			
22	Thu			
23	Fri			
24	Sat			
25	Sun		Christmas	
26	Mon			
27	Tue			
28	Wed			
29	Thu			
30	Fri			
31	Sat			

Date	Day	Order	<b>JANUARY - 2023</b>	No. of Working Days
1	Sun		New Year's Day	
2	Mon			
3	Tue			
4	Wed			
5	Thu	I	College Reopens Microbiology Conference	1
6	Fri	II	AZB Association - Fauna	2
7	Sat	III	N & D Association	3
8	Sun			
9	Mon	IV	BBA Conference	4
10	Tue	V	Commerce - International Conference	5
11	Wed	VI	Commerce - International Conference	6
12	Thu	I	Biochemistry Association / Symposium	7
13	Fri	II	Pongal Celebrations	8
14	Sat		Bhogi	
15	Sun		Pongal	

Date	Day	Order	<b>JANUARY - 2023</b>	No. of Working Days
16	Mon		Thiruvalluvar Day	
17	Tue		Uzhavar Thirunal	
18	Wed	III	Biochemistry Association / Symposium	9
19	Thu	IV	International Multidisciplinary Conference (Economics, His & TTM, English, BBM)	10
20	Fri	V	International Multidisciplinary Conference (Economics, His & TTM, English, BBM)	11
21	Sat	VI	Microbiology Alumni Meet (25th Year) Microbiology Association	12
22	Sun			
23	Mon	I	RRC - Maatram	13
24	Tue	II	Bank Management - International Conference	14
25	Wed	III	Sanskrit Association	15
26	Thu		Republic Day, OSA Day	
27	Fri	IV	Physics Association	16
28	Sat			
29	Sun			
30	Mon	V	A & F Seminar	17
31	Tue	VI	B.Com Accounting & Finance Association	18

Date	Day	Order	<b>FEBRUARY - 2023</b>	No. of Working Days
1	Wed	I	Shrishti	19
2	Thu	II	Shrishti	20
3	Fri	III	Shrishti	21
4	Sat	IV		22
5	Sun		Thai Poosam	
6	Mon	V	Sekizar Vizha	23
7	Tue	VI	Computer Science Association	24
8	Wed	I	English Dramatics	25
9	Thu	II	B.Com Accounting & Finance - Seminar Continuous Assessment Test - I	26
10	Fri	III	Continuous Assessment Test - I	27
11	Sat			
12	Sun			
13	Mon	IV	Continuous Assessment Test - I	28
14	Tue	V	Continuous Assessment Test - I	29
15	Wed	VI	Continuous Assessment Test - I	30

Date	Day	Order	<b>FEBRUARY - 2023</b>	No. of Working Days
16	Thu	I	Continuous Assessment Test - I	31
17	Fri	II	French Association	32
18	Sat	III	Union - Rhapsody	33
19	Sun			
20	Mon	IV	On Line Payment of End Semester Examination Fees Begins History Association	34
21	Tue	V		35
22	Wed	VI	Computer Science Conference	36
23	Thu	I		37
24	Fri	II	Maths with CA Association	38
25	Sat		Union - Theatro	
26	Sun			
27	Mon	III	Chemistry Association-Quanta	39
28	Tue	IV	Physics - National Science Day Celebrations	40

Date	Day	Order	<b>MARCH - 2023</b>	No. of Working Days
1	Wed	V	Financial Literacy Club	41
2	Thu	VI	Commerce (Hons) - International Conference	42
3	Fri	I	Last Date to Pay End Semester Examination Fees	43
4	Sat		Mahaveer Jayanthi	
5	Sun			
6	Mon	II	Psychology	44
7	Tue	III	Human Rights - International Conference	45
8	Wed	IV		46
9	Thu	V	IQAC Workshop	47
10	Fri	VI	IQAC Workshop	48
11	Sat			
12	Sun			
13	Mon	I	Union Chronicles	49
14	Tue	II		50
15	Wed	III	Journalism Association	51

Date	Day	Order	<b>MARCH - 2023</b>	No. of Working Days
16	Thu	IV		52
17	Fri	V		53
18	Sat	VI		54
19	Sun			
20	Mon	I	Continuous Assessment Test - II	55
21	Tue	II	Continuous Assessment Test - II	56
22	Wed		Telugu New Year	
23	Thu	III	Continuous Assessment Test - II	57
24	Fri	IV	Continuous Assessment Test - II	58
25	Sat			
26	Sun			
27	Mon	V	Continuous Assessment Test - II	59
28	Tue	VI	Continuous Assessment Test - II	60
29	Wed	I		61
30	Thu	II		62
31	Fri	III		63



Date	Day	Order	APRIL - 2023	No. of Working Days
1	Sat	IV		64
2	Sun			
3	Mon	V		65
4	Tue	VI		66
5	Wed	I		67
6	Thu	II		68
7	Fri		Good Friday	
8	Sat			
9	Sun		Easter	
10	Mon	III	Practical Exams Begin	69
11	Tue	IV		70
12	Wed	V		71
13	Thu	VI		72
14	Fri		Tamil New Year / Dr. AmbedkarJayanthi	
15	Sat			

Date	Day	Order	<b>APRIL - 2023</b>	No. of Working Days
16	Sun			
17	Mon	I	Union Elections	73
18	Tue	II		74
19	Wed	III		75
20	Thu	IV		76
21	Fri	V	Union Valedictory	77
22	Sat		Ramzan	
23	Sun			
24	Mon	VI		78
25	Tue	I		79
26	Wed	II		80
27	Thu	III	Part IV / NME / Soft Skill Exams	81
28	Fri	IV	Part IV / NME / Soft Skill Exams	82
29	Sat	V	Part IV / NME / Soft Skill Exams	83
30	Sun			

Date	Day	Order	<b>MAY - 2023</b>	No. of Working Days
1	Mon		May Day	
2	Tue	VI		84
3	Wed	I		85
4	Thu	II		86
5	Fri	III		87
6	Sat	IV		88
7	Sun			
8	Mon	V		89
9	Tue	VI		90
10	Wed			
11	Thu			
12	Fri			
13	Sat			
14	Sun			
15	Mon		End Semester Examinations Begin	

Date	Day	Order	<b>MAY - 2023</b>	No. of Working Days
16	Tue			
17	Wed			
18	Thu			
19	Fri			
20	Sat			
21	Sun			
22	Mon			
23	Tue			
24	Wed			
25	Thu			
26	Fri			
27	Sat			
28	Sun			
29	Mon			
30	Tue			
31	Wed			

# ETHIRAJ COLLEGE FOR WOMEN (SELF-SUPPORTING)

## 2022 - 2023 UG FEES STRUCTURE 1st YEAR 1st SEMESTER

Sl. No.	L.A.M. DESCRIPTION	Tuition Fee	College Fee	Janus Sports Center Charges	Government Registration	Library	College Bus	TOTAL
1	EXERCISE	1000	000	000	000	000	000	6000
2	DANCE	1000	000	000	000	000	000	6000
3	UNIFORMS	1000	000	000	000	000	000	6000
4	BOOKS	1000	000	000	000	000	000	6000
5	FOOD	1000	000	000	000	000	000	6000
6	LABS	1000	000	000	000	000	000	6000
7	REP	1000	000	000	000	000	000	6000
8	WATER	1000	000	000	000	000	000	6000
9	WATER SUPPLY	1000	000	000	000	000	000	6000
10	WATER SUPPLY	1000	000	000	000	000	000	6000
11	EXERCISE	1000	000	000	000	000	000	6000
12	DANCE	1000	000	000	000	000	000	6000
13	UNIFORMS	1000	000	000	000	000	000	6000
14	BOOKS	1000	000	000	000	000	000	6000
15	FOOD	1000	000	000	000	000	000	6000
16	LABS	1000	000	000	000	000	000	6000
17	REP	1000	000	000	000	000	000	6000
18	WATER	1000	000	000	000	000	000	6000
19	WATER SUPPLY	1000	000	000	000	000	000	6000
20	WATER SUPPLY	1000	000	000	000	000	000	6000

Total

# ETHIRAJ COLLEGE FOR WOMEN (SELF-SUPPORTING)

## 2022 - 2023 PG FEES STRUCTURE 1st YEAR 1st SEMESTER

### ETHIRAJ COLLEGE FOR WOMEN (SELF SUPPORTING) 2022-23 PG FEES STRUCTURE- 1st Year 1st Semester

Sl.No	Name of the Course	Tuition Fees	College fees	Library deposit/Contribution	Govern ment Remittance	Lab fees	P T A	C D F	SPORTS	Total
1	M A Human Rights And Duties	8885	500	250	340		50	3000	150	13175
2	M.Com.Corporate Secretaryship	14885	500	250	340		50	3000	150	19175
3	M.Com Banking Insurance Management	21885	500	250	340		50	3000	150	26175
4	M.Com	21885	500	250	340		50	3000	150	26175
5	M. A. Journalism and Communication	14910	500	250	340		50	3000	150	19200
6	M.Sc Physics	14635	500	500	340	5000	50	3000	150	24175
7	M.Sc Plant Biology & Plant Biotechnology	11635	500	500	340	5000	50	3000	150	21175
8	M.Sc Mathematics	16885	500	250	340		50	3000	150	21175
9	M.Sc Food Nutrition & Nutrition	24635	500	500	340	5000	50	3000	150	34175
10	M.Sc Biochemistry	21135	500	500	340	5000	50	3000	150	30675
11	M.Sc.Applied Microbiology	22635	500	500	340	5000	50	3000	150	32175
12	MA Human Resource Management	16910	500	250	340		50	3000	150	21200
13	MSc Applied Psychology	23000	500	500	340	5000	50	3000	150	32540
14	M A English	8885	500	250	340		50	3000	150	13175

\* OSA - Rs.500/- per annum will be collected in the second semester

\* Whenever computer subject is offered as paper,an additional amount of Rs.1500/- is payable per semester

**TIME TABLE  
SEMESTER II / IV / VI**

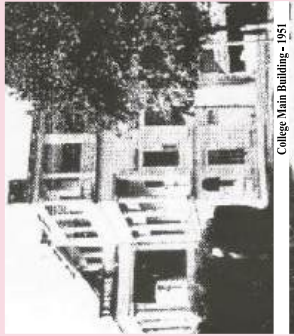
COURSE .....	YEAR .....					
Hours Day Order	I	II	III	IV	V	VI
I						
II						
III						
IV						
V						
VI						

**TIME TABLE  
SEMESTER II / IV / VI**

COURSE .....	YEAR .....					
	Hours Day Order	I	II	III	IV	V
I						
II						
III						
IV						
V						
VI						



## NOTES



College Main Building - 1951



Founder with the audience in a relaxed mood



Jose Owens - Olympic Gold Medalist 1956 - with the Sports Stars of the college



Dr. S. Radhakrishnan - Vice President of India



Shree - Jubilee Celebrations with Prime Minister Smt. Indira Gandhi - 1973



Sri Rajaji - Governor of Madhya Pradesh in the college - 24th Aug 1948



Congress President Mrs. Indira Gandhi's first visit - College Day 1959



First Convocation held in the college - 1975



Founder and his wife, Kathleen with Dignitaries



Special Invites to the College - Former C.M. Mr. Kamaraj and Tamil Scholar Mr. K.V. Jeganathan